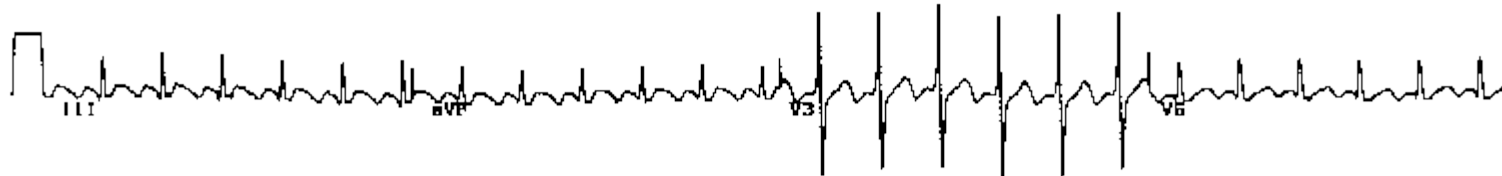
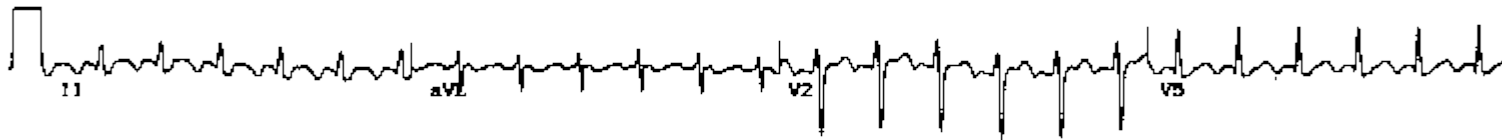
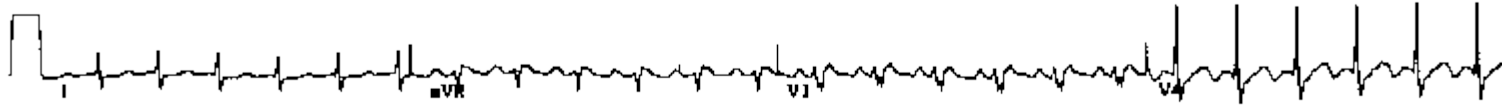


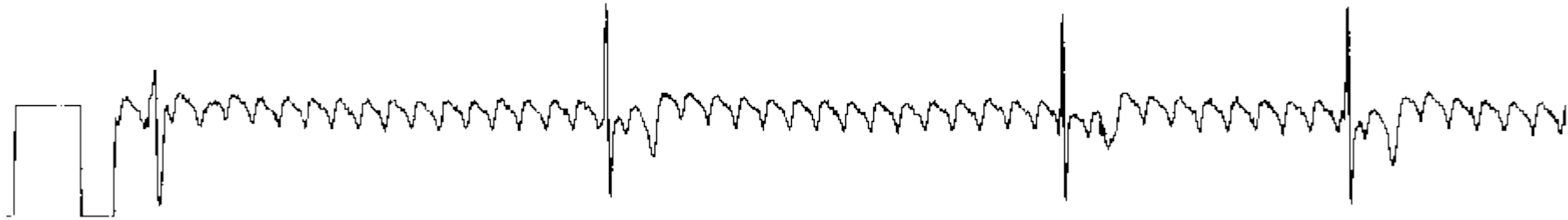
An 57 year old lady with palpitations.



Atrial flutter with 2:1 AV conduction

- The sawtooth waveform of atrial flutter can usually be seen in the inferior leads II, III and aVF if one looks closely. Sometimes the rapid atrial rate can be seen in V1.
- Suspect atrial flutter with 2:1 block when you see a rate of about 150 bpm.

A 68 year old lady on digoxin complaining of lethargy.



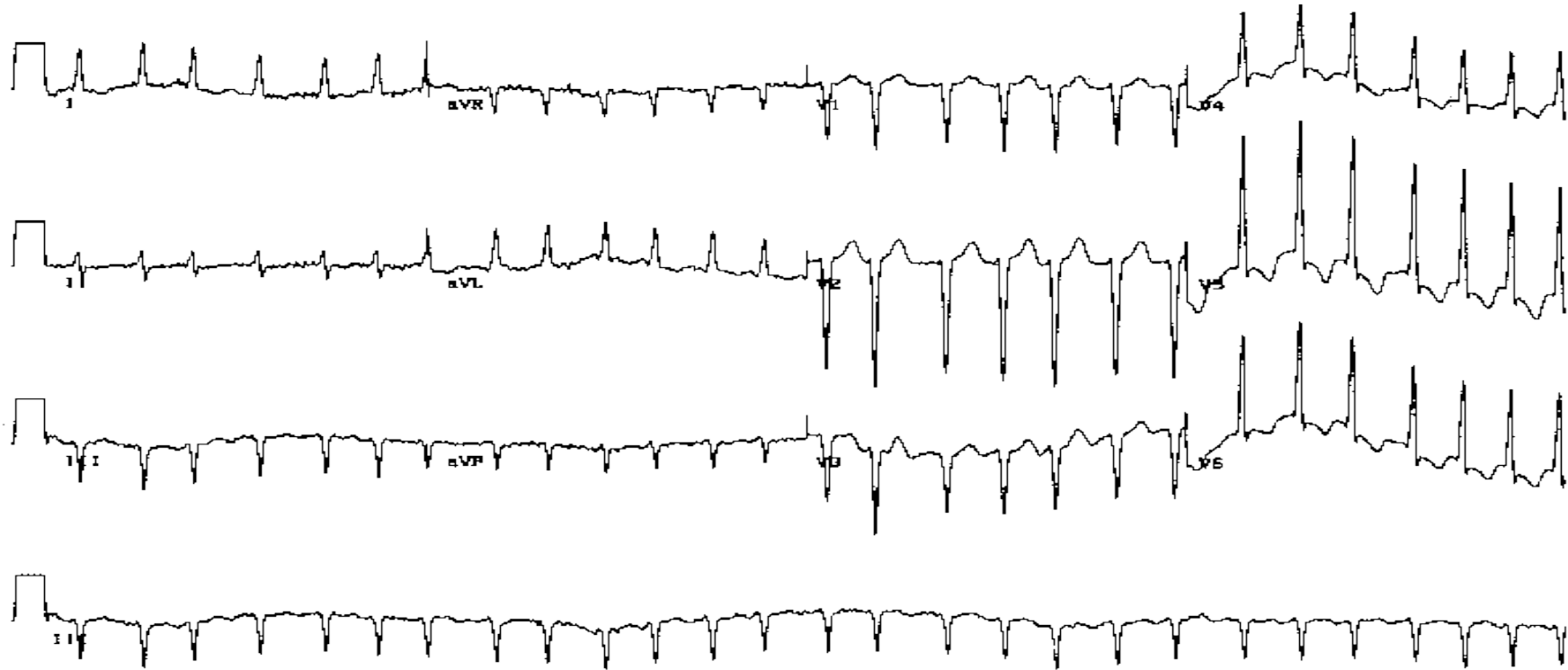
Atrial flutter

- A characteristic 'sawtooth' or 'picket-fence' waveform of an intra-atrial re-entry circuit usually at about 300 bpm.

This lady was taking rather too much digoxin and has a very slow ventricular response.

[Go back to ECG homepage](#)

A 76 year old man with breathlessness.



Atrial fibrillation with rapid ventricular response

- Irregularly irregular ventricular rhythm.
- Sometimes on first look the rhythm may appear regular but on closer inspection it is clearly irregular.

[Go back to ECG homepage](#)